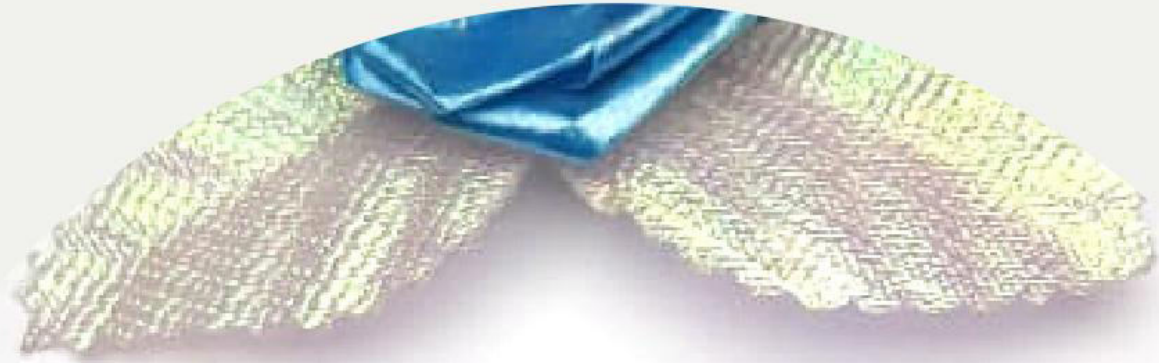


**SA (V-Shape)**

**RONSON**



**Product Details:**

**Name : SA (V-Shape)**

**Ring No : 14**

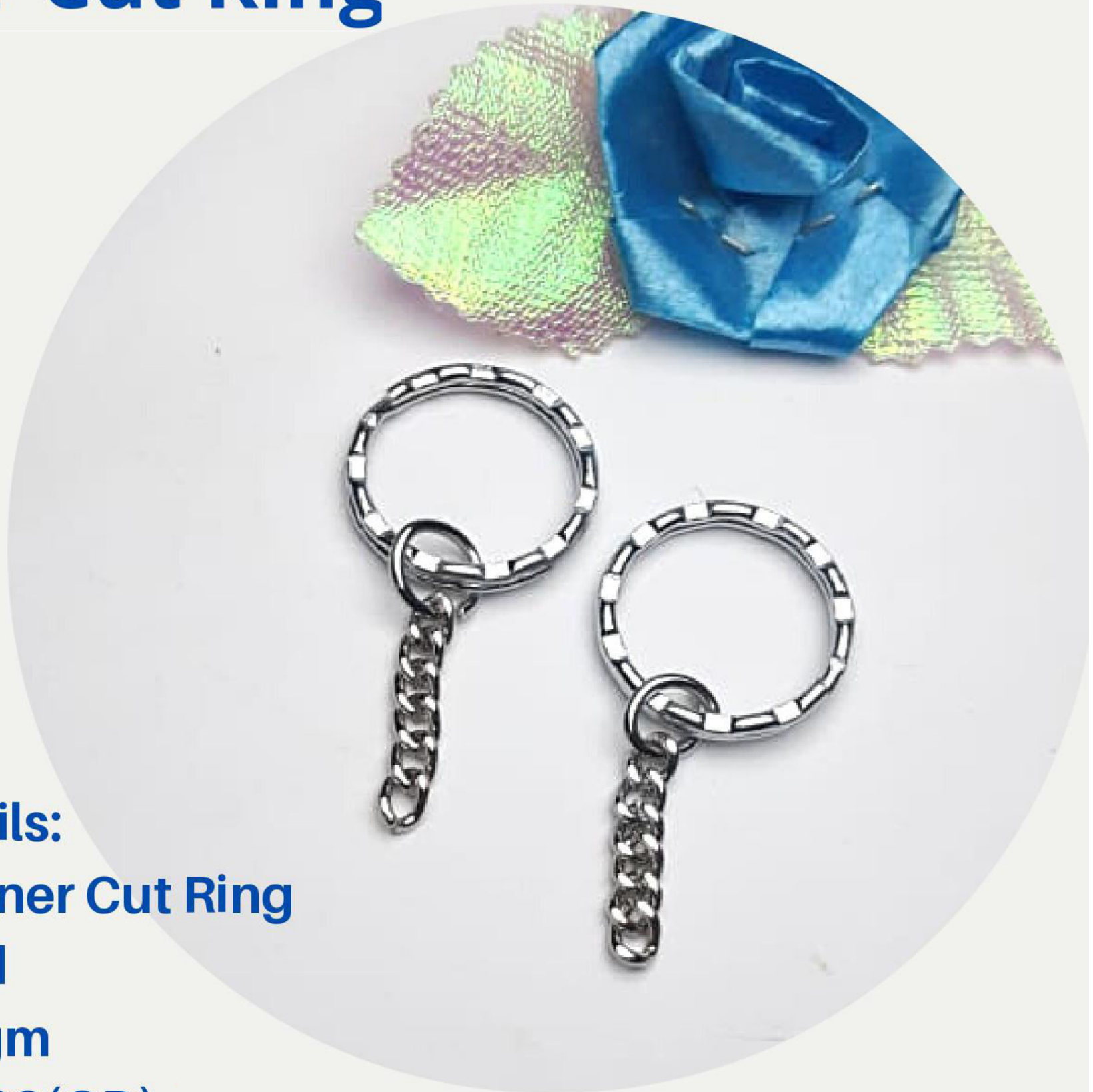
**Plating : Chrome**

**Weight : 4.7 gm**

**Size : 25 (ID), 29 (OD)**

**RONSON**

# Designer Cut Ring



**Product Details:**

**Name : Designer Cut Ring**

**Chrome Plated**

**Weight : 03 gm**

**Size : 19(ID), 23(OD)**

# Regular Chain Ring

**RONSON**



## **Product Details:**

**Name : Regular Ring**

**Ring no: 17**

**Nickel Plated**

**Weight: 2.0gm**

**Size : 18(ID), 20(OD)**

# **AP-Special Flat**

**Product Details:**

**Name : AP-Special Flat**

**Nickel Plated**

**Weight : 6.6 gm**

**Size : 24(ID), 29(OD)**



# 13-Special Flat



**Product Details:**

**Name :** Special Flat

**Nickel Plated**

**Weight :** 6.8 gm

**Size :** 24 (ID) , 29(OD)

# High Tension- Oval

**RONSON**



## Product Details:

**Name : High Tension- Oval**

**Nickel Plated**

**Weight : 3.2 gm**

**Size : 26 (ID), 29 (OD)**

# **14 Regular Flat**



**Product Details:**

**Name : Flat Ring**

**Nickel Plated**

**Weight : 3.3 gm**

**Size : 23 (ID), 26 (OD)**

# Regular (V-Shape)



**Product Details:**

**Name : Regular (V-Shape)**

**Ring No : 16**

**Nickel Plated**

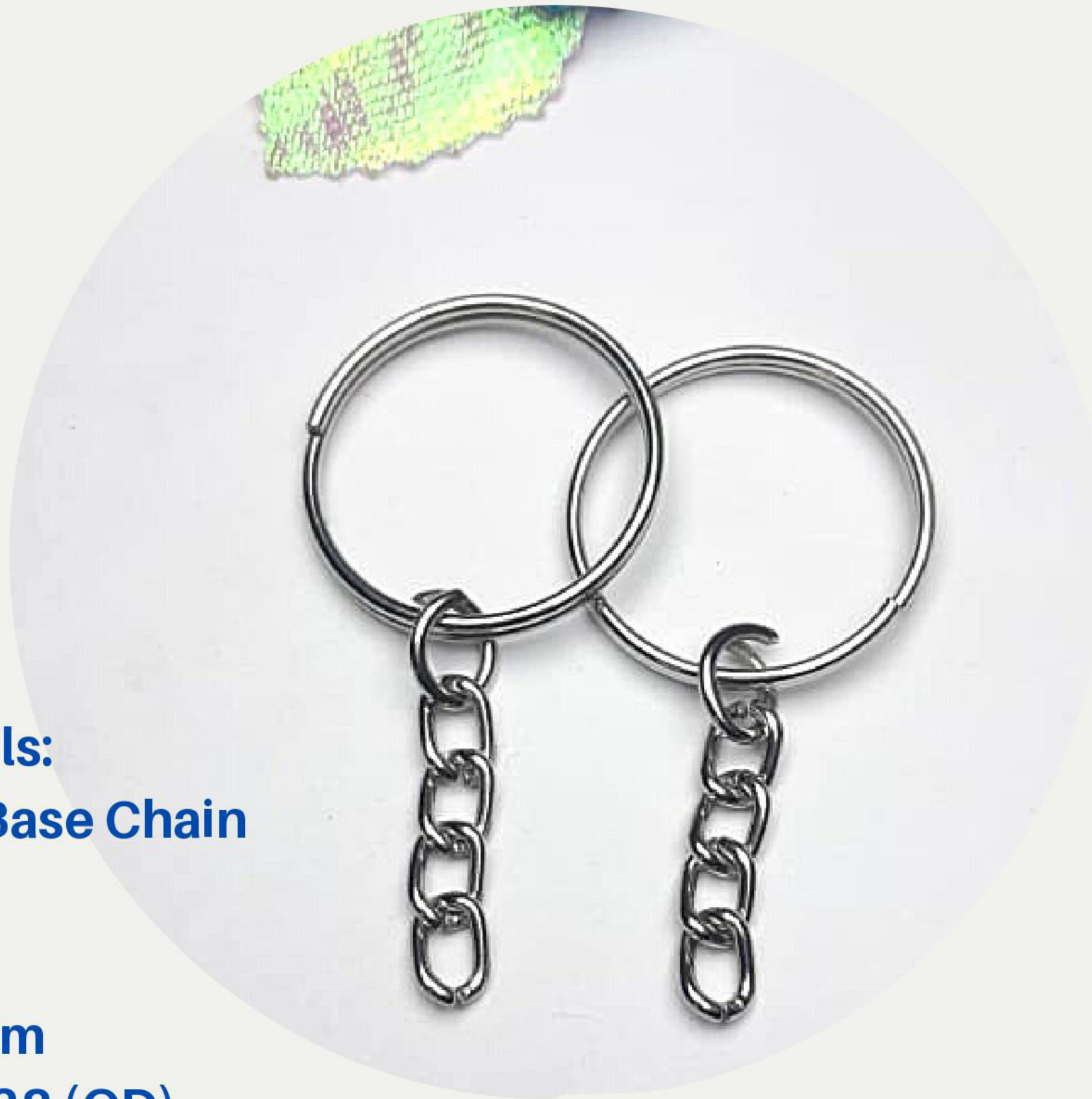
**Weight : 2.9 gm**

**Size : 22 (ID), 25 (OD)**



# Hard Base Chain

**RONSON**



## Product Details:

**Name : Hard Base Chain**

**Ring No : 14**

**Nickel Plated**

**Weight : 3.2 gm**

**Size : 25 (ID), 28 (OD)**

# Hard Base Chain Ring

**RONSON**



## Product Details:

**Name :Hard Base Chain Ring**

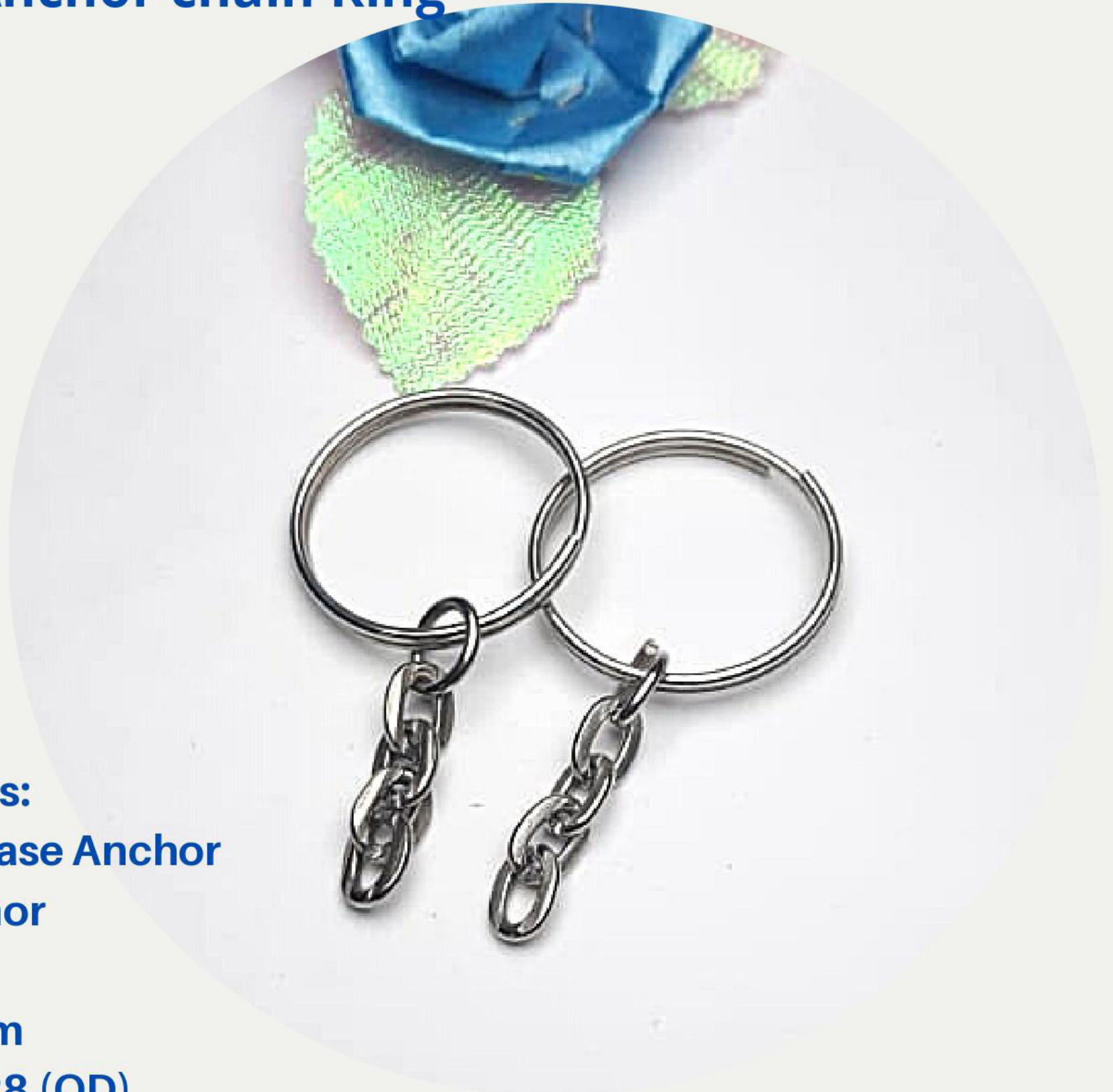
**Ring No : 16**

**Nickel Plated**

**Weight : 2.9 gm**

**Size : 25 (ID), 28 (OD)**

# Hard Base Anchor chain Ring



**Product Details:**

**Name : Hard Base Anchor**

**Ring No : Anchor**

**Plating : Nikel**

**Weight : 3.2 gm**

**Size : 25 (ID), 28 (OD)**

# High Tension Chain Ring



**Product Details:**

**Name : High Tension**

**Ring No : 14**

**Plating : Nikel**

**Weight : 3.8 gm**

**Size : 26 (ID), 29 (OD)**

## **Hard Base Ovel Chain Ring**



**Product Details:**

**Name : Hard Base Ovel**

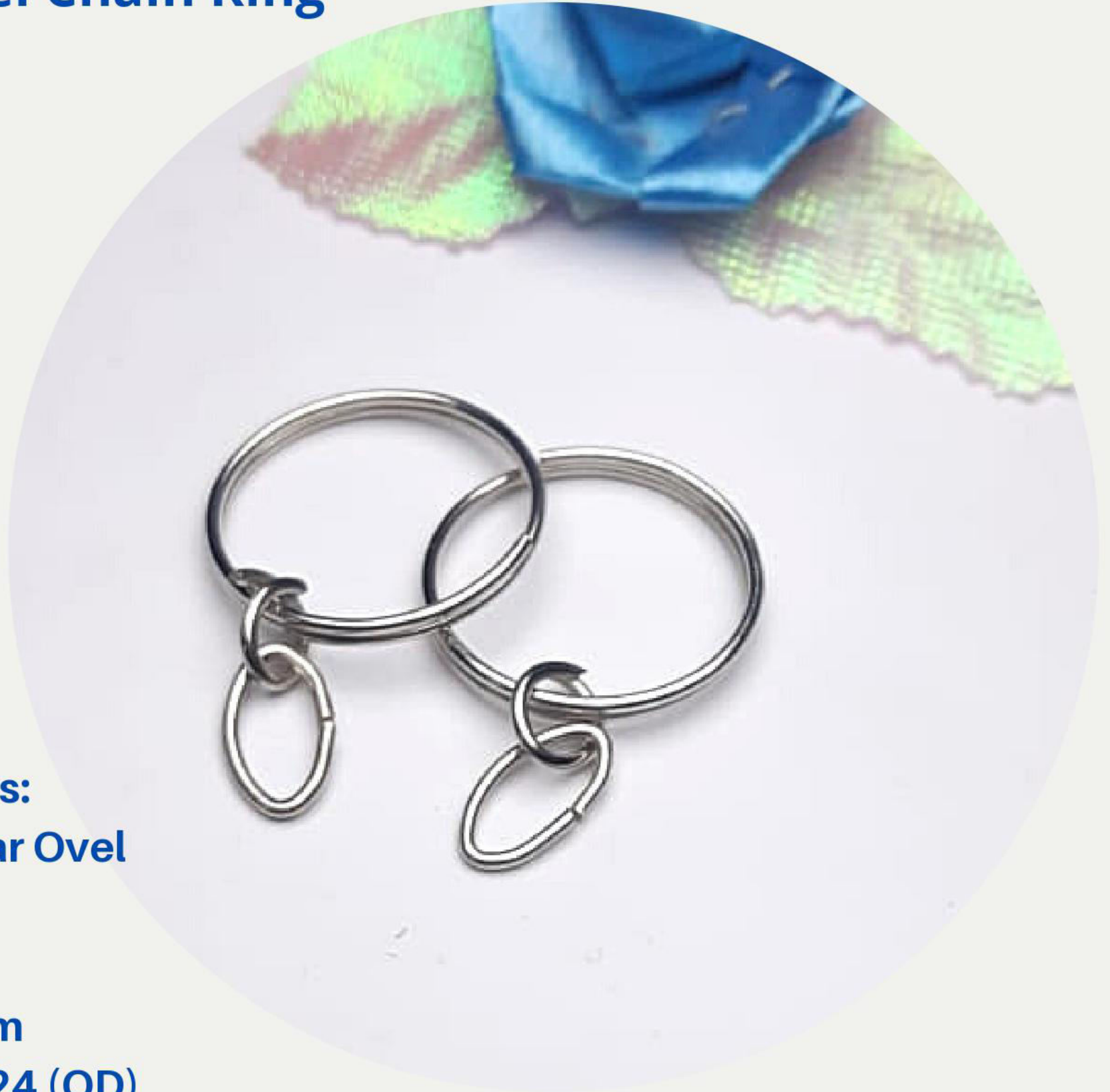
**Ring No : Ovel**

**Plating : Nikel**

**Weight : 2.7 gm**

**Size : 25 (ID), 28 (OD)**

## **Regular Ovel Chain Ring**



**Product Details:**

**Name : Regular Ovel**

**Ring No : Ovel**

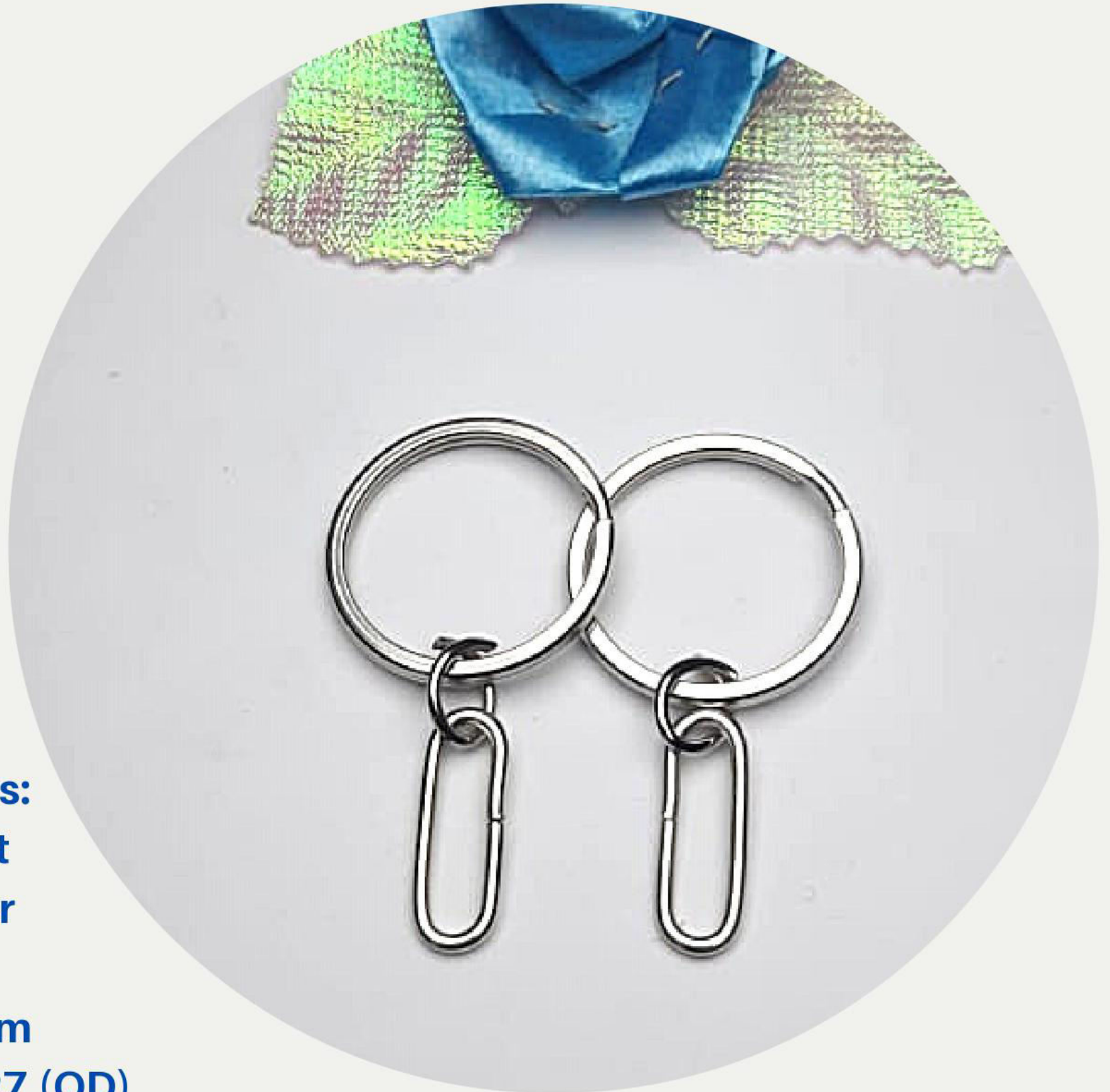
**Plating : Nikel**

**Weight : 2.3 gm**

**Size : 22 (ID), 24 (OD)**

# Flat Slider Ring

**RONSON**



## Product Details:

**Name : Big Flat**

**Ring No : Slider**

**Plating : Nikel**

**Weight : 3.9 gm**

**Size : 23 (ID), 27 (OD)**

# Flat Chain Ring

**RONSON**



## **Product Details:**

**Name : Big Flat**

**Ring No : 216**

**Plating : Nikel**

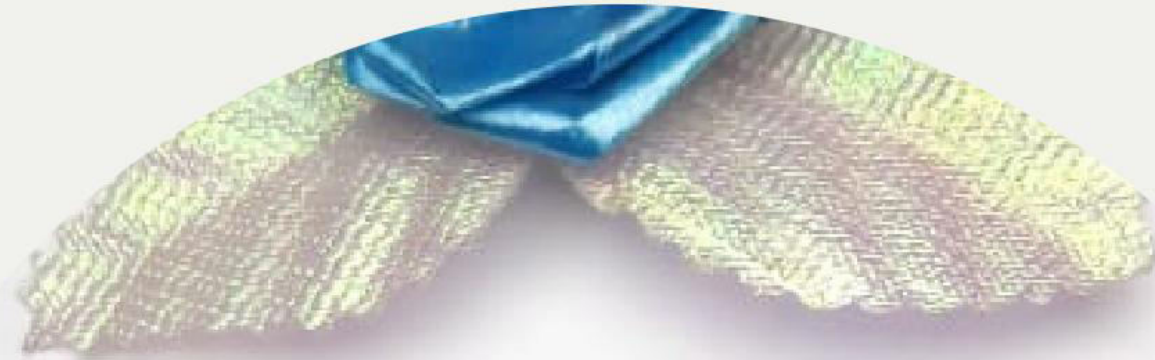
**Weight : 3.6 gm**

**Size : 23 (ID), 27 (OD)**



# Small (V-Shape) Chain Ring

**RONSON**



## Product Details:

**Name : Small (V-Shape)**

**Ring No : 14**

**Plating : Nikel**

**Weight : 3.7 gm**

**Size : 24(ID), 28 (OD)**

# High Tension Chain Ring

**RONSON**



## Product Details:

**Name : High Tension**

**Ring No : 13**

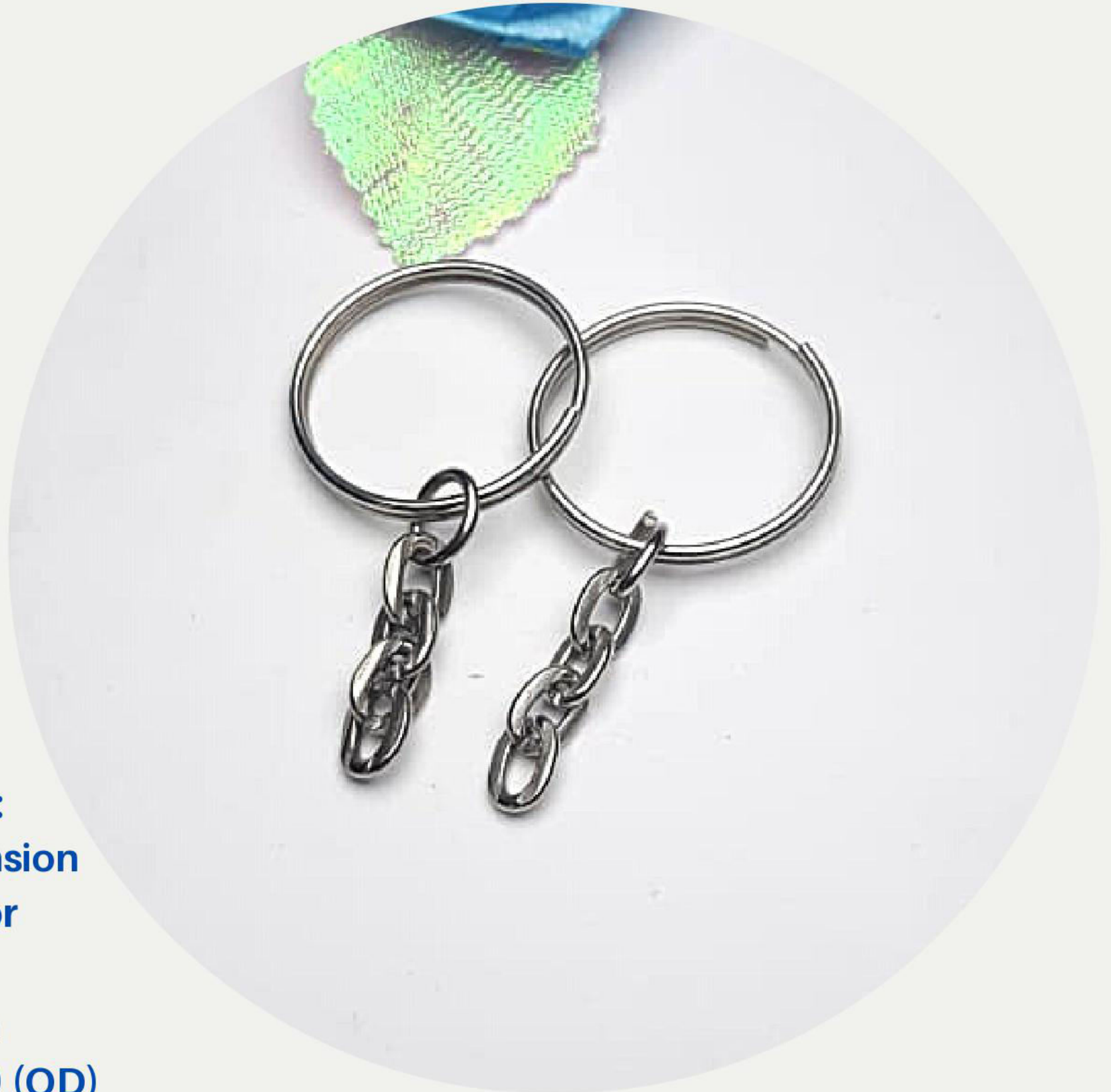
**Plating : Nikel**

**Weight : 4.7 gm**

**Size : 26 (ID), 29 (OD)**

# High Tension Anchor Chain Ring

**RONSON**



## Product Details:

**Name : High Tension**

**Ring No : Anchor**

**Plating : Nikel**

**Weight : 3.8 gm**

**Size : 26 (ID), 29 (OD)**

## **Special (V-Shape) Chain Ring**



**Product Details:**

**Name : Special (V-Shape)**

**Ring No : 13**

**Plating : Nikel**

**Weight : 6.2 gm**

**Size : 25 (ID), 29 (OD)**

## **Special (V-Shape) Chain Ring**



### **Product Details:**

**Name : Special (V-Shape)**

**Ring No : 14**

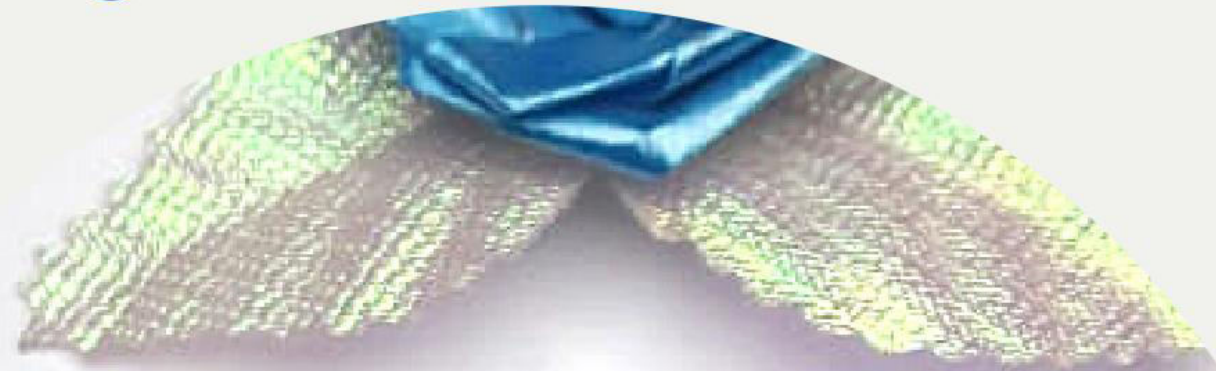
**Plating : Nikel**

**Weight : 5.0 gm**

**Size : 25 (ID), 29 (OD)**

# 155-Flat Chain Ring

**RONSON**



## **Product Details:**

**Name : 155-Flat**

**Ring No : 13**

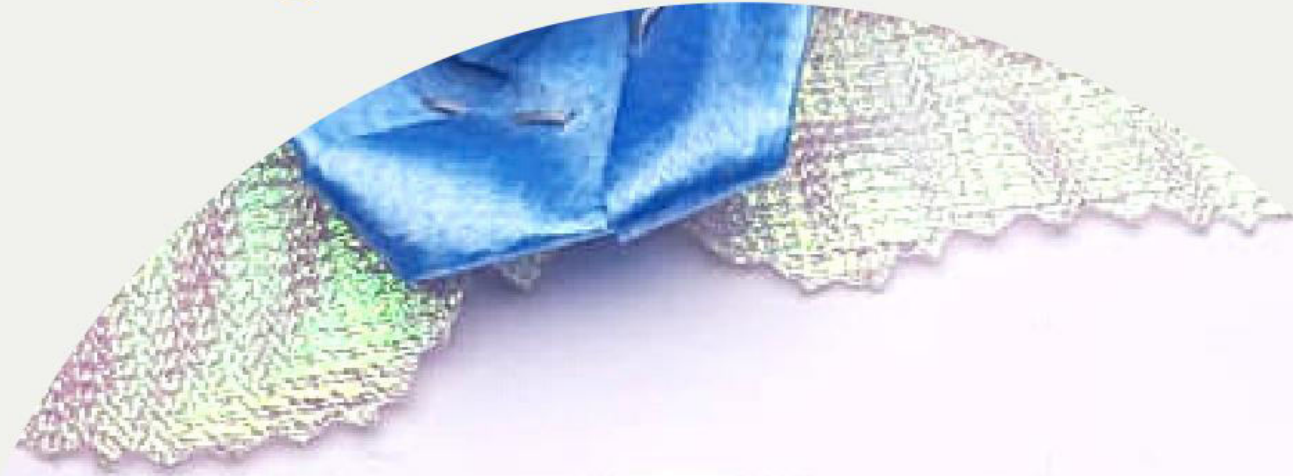
**Plating : Nikel**

**Weight : 6.2 gm**

**Size : 26 (ID), 30 (OD)**

# Regular Chain Ring

**RONSON**



## **Product Details:**

**Name : Regular Chain**

**RingRingRing No : 16**

**Nickel Plated**

**Weight : 2.2 gm**

**Size : 21 (ID) 23 (OD)**

# Nikel Chain Ring

**RONSON**



## Product Details:

Name : Nikel chain ring

Ring No : 170

Plating : Nickel

Weight : 7.2 gm

Size : 28(ID), 32 (OD)



**High Tension**

**RONSON**



**Product Details:**

**Name : High Tension**

**Ring No : 2 link**

**Plating : Nickel**

**Weight : 4.1 gm**

**Size : 26 (ID), 29 (OD)**

# V-Shape s-Hook

**RONSON**



## **Product Details:**

**Name : V-Shape s-Hook**

**Ring No : 16**

**Plating : Nickel**

**Weight : 3.2 gm**

**Size : 22(ID), 25(OD)**

**BEST QUALITY OF PRODUCTS**

# V-Shape s-Hook

**RONSON**



## **Product Details:**

**Name : V-Shape s-Hook**

**Ring No : 16**

**Plating : Chrome**

**Weight : 3.2 gm**

**Size :22(ID), 25(OD)**

# Flat Chain

**RONSON**



## Product Details:

**Name : Flat Chain**

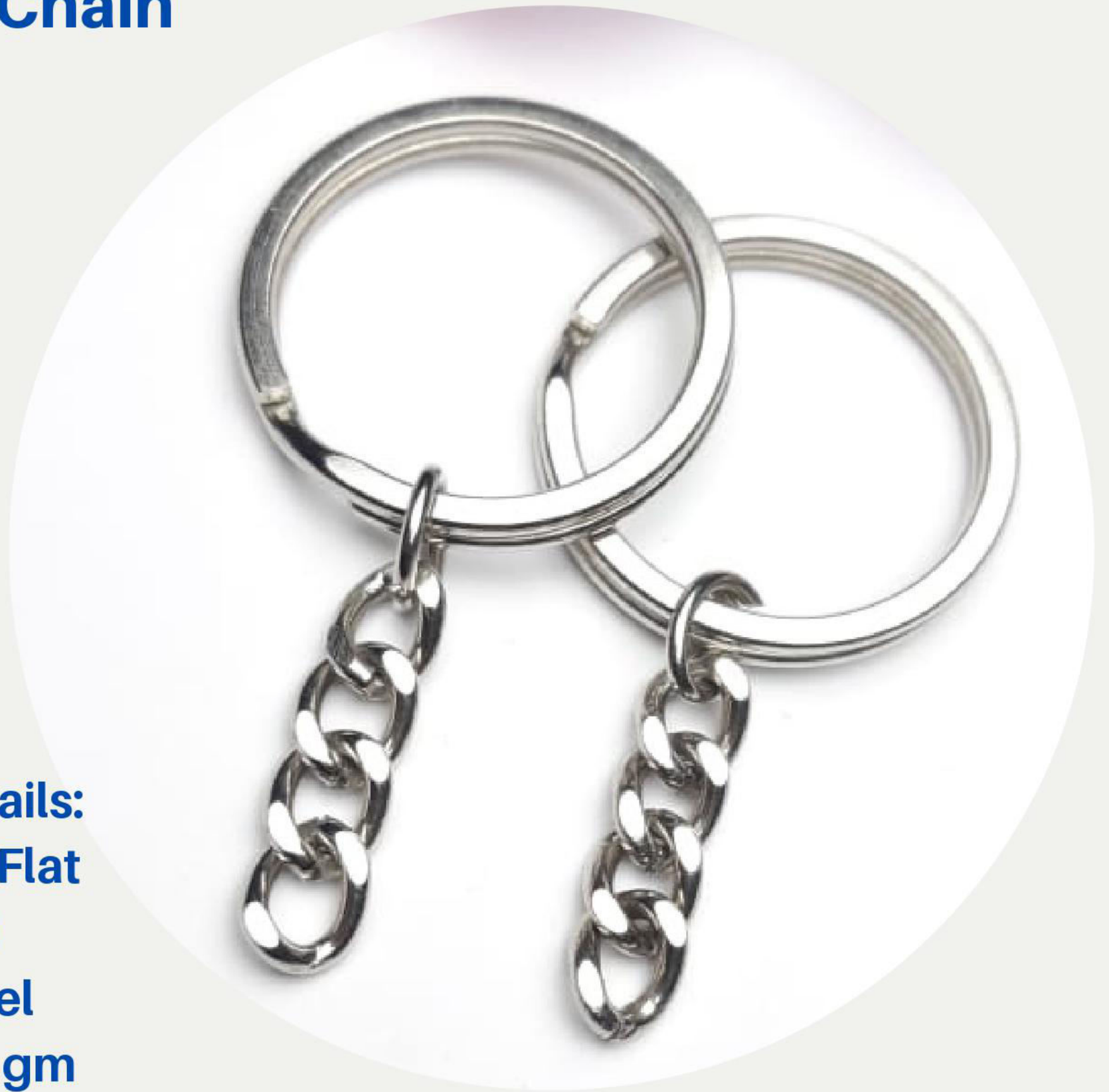
**Ring No : 13**

**Plating : Nickel**

**Weight : 4.8 gm**

**Size : 23 (ID), 27 (OD)**

# 160-Flat Chain



## Product Details:

**Name : 160-Flat**

**Ring No : 13**

**Plating : Nikel**

**Weight : 7.2 gm**

**Size : 28 (ID), 32 (OD)**

**SA (Flat Crome)**

**RONSON**



**Product Details:**

**Name : SA (Flat )**

**Ring No : 14**

**Plating : Crome**

**Weight : 4.6 gm**

**Size : 25 (ID), 29 (OD)**

**BEST QUALITY OF PRODUCTS**